



**nami**

National Alliance on Mental Illness



*Helping individuals,  
children and families  
who have loved ones with  
mental illness*

**2010 Annual Report**

## Executive Director's Message

The National Alliance on Mental Illness, or NAMI of Erie County, cares about individuals, children and families in Erie County. The agency helps over 3,000 people each year!

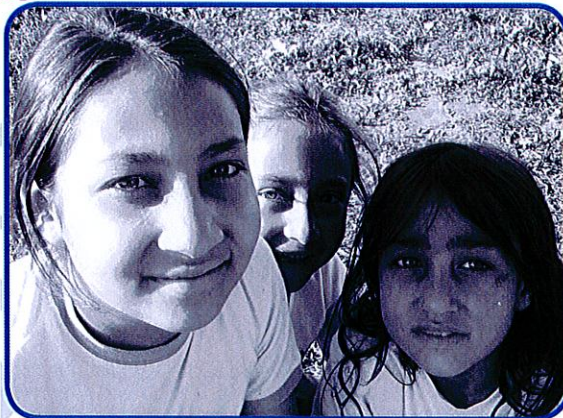
I encourage you to "spread the word" about the agency's Family-to-Family program. It helps strengthen the family unit through education and support for caregivers and family members who have a loved one with a mental illness.

Together, through advocacy and education, there is HOPE for an increase in the public's awareness and support of mental health. Everyone needs to play a part in educating others about mental health so the stigma can decrease and acceptance of brain disorders increase in the Erie community. But it all starts with you, your family, your neighbors - let's make a difference in the mental health system **today!**

Sincerely,

*Denise L. Kolivoski*

Denise L. Kolivoski, MBA  
Executive Director



## Success Story

The agency's Family-to-Family program is a unique 12-week educational course provided at no cost to the Erie community. It is open to caregivers and family members who have loved ones with a mental illness.

Christina Halli, pictured above, and her family benefited from the Family-to-Family program. After her son was diagnosed with bipolar disorder, she was overwhelmed. "Then, I realized that I needed to learn more about mental illness to advocate on my son's behalf. I enrolled in the Family-to-Family program and it has made a huge difference in my family's life," says Christina, "I highly recommend this course."



## Volunteer's Message



NAMI of Erie County would like to thank the Kiwanis Club of Erie for their hard work and dedication to helping children and their families faced with the challenge of mental illness. For the second year, the Kiwanis partnered with NAMI to host an annual golf tourney on Monday, June 13, 2011. The event was a success! The proceeds that were raised helped provide books and classroom materials

for the Family-to-Family program. Club President, Tom Kalkhof says that "support for NAMI is more important than ever. Individuals and corporations are encouraged to play a part in providing mental health education to the Erie community."

A big "THANK YOU" to all of the members of the Club who volunteered their time and talents to make the event a success!



# nami

National Alliance on Mental Illness

1611 Peach Street - Suite 105  
Erie, PA 16501

## Audited Financial Information 2010-2011

<b>Grants</b>	
Erie Co. Mental Health/Mental Retardation Fund	\$151,844
Erie Community Foundation	25,198
GE Transportation	25,000
Arlene Smith Foundation	5,000
Ronald McDonald House	3,000
Corry Community Foundation	6,800
United Way - Women in Action	2,572
GECAC	5,295
Donations	6,185
Fundraising	5,500
<b>Total Operating Revenue in 2010</b>	<b>\$236,394</b>

## Board of Directors 2010-2011

**President:** Sheila Silman, MS  
**Vice President:** Rose DeNiro, BA  
**Treasurer:** George Fickenworth, MBA  
**Secretary:** Chris Jordan, BA

Carolyn Gold, Esq.      Sonya Adams, MSA  
Ida Page, BA            William Roche, BS  
Mat Sipple, DO

Non-Profit Org.  
US Postage  
PAID  
Erie, PA  
Permit 858